

NORTH
EAST
COLOR



PVC/ACM Panel with VHB Tape Mount

INSTALLATION GUIDE

SKU# N/A | ver. 062323

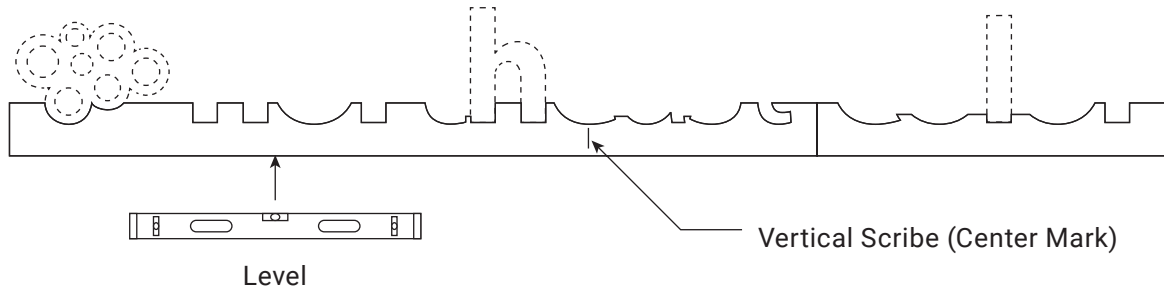
For Support Call: 603.436.8210

Sign Installation

For this installation, you will need the styrene mounting template, which came with your sign.

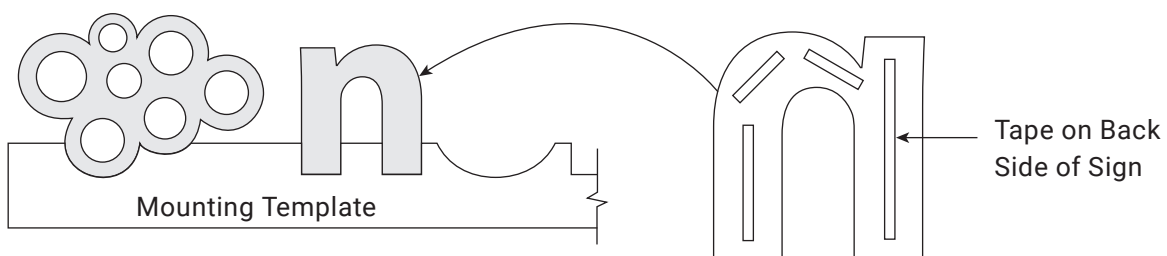
1 Site Preparation

Begin by cleaning the mounting surface of any dust, oils or residue with a clean rag and appropriate cleaning solution. A tack cloth (not included) may also be used.



2 Template Placement

Position the template in the desired location on the mounting surface. The template can be held in place with masking or painters tape. The vertical scribe on the template marks the center of the sign. This will assist in centering the sign on the mounting surface. The bottom edge can be used to level the sign. Hold up various parts of the sign over the template to ensure it's properly positioned.



3 Sign Installation

Peel the liner away from the tape on the back side of the sign, exposing the adhesive. Position over the corresponding spot on the template and carefully press against the mounting surface. Once the section of the sign is in place, press firmly to ensure the adhesive tape has made good contact. Repeat with the remaining sections of the sign.