

NORTH
EAST
COLOR



PetWellClinic Logo Non-Lit Sign

INSTALLATION GUIDE

SKU# PW0039 | ver. 033023

For Support Call: 603.436.8210



Two Persons are
Recommended
for this Installation

What Comes in the Box?



Sign

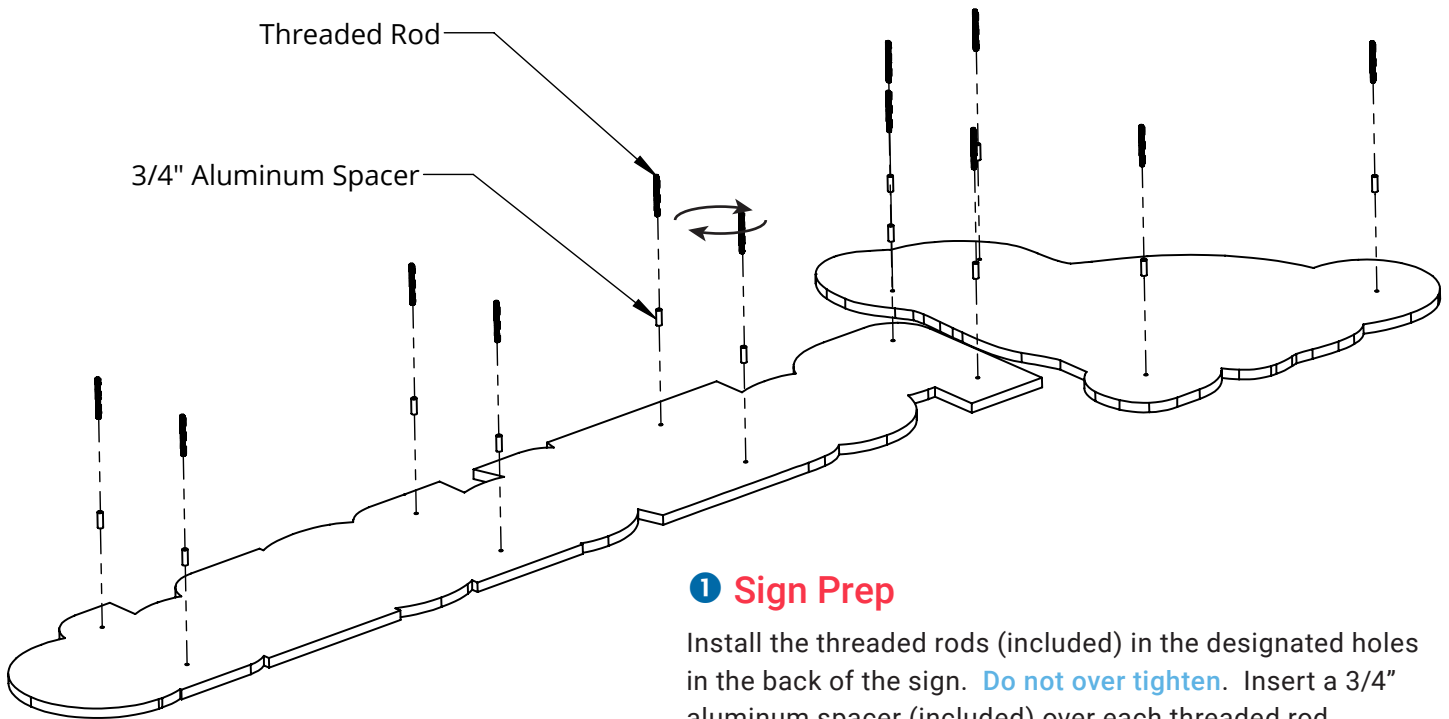


(12) 3/16" x 2" Threaded Rods



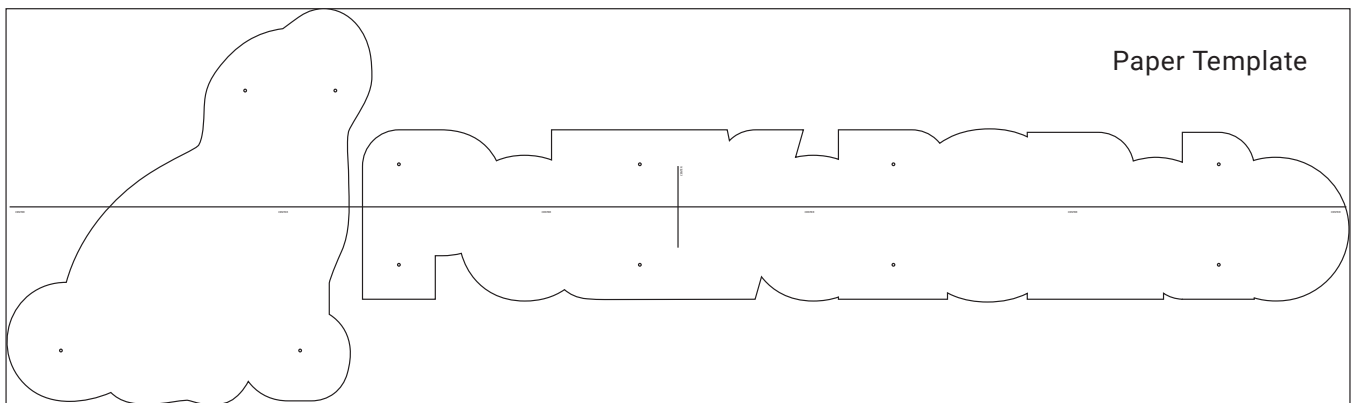
(12) 3/4" Aluminum Spacers

Sign Installation



1 Sign Prep

Install the threaded rods (included) in the designated holes in the back of the sign. **Do not over tighten.** Insert a 3/4" aluminum spacer (included) over each threaded rod.

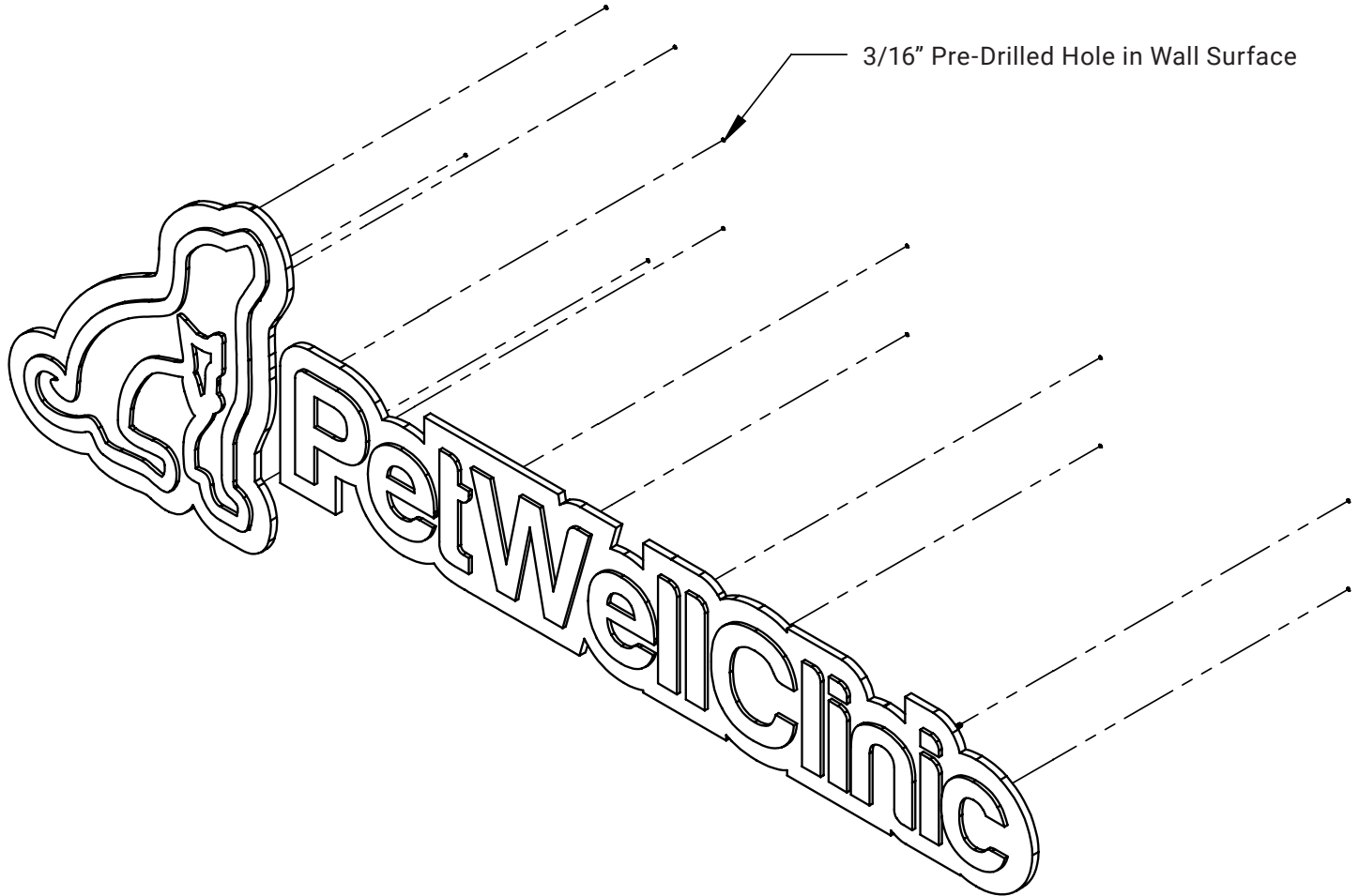


Paper Template

2 Paper Template

Place the paper template (included) on the wall and secure with tape. Use the horizontal & vertical lines to assist in centering & leveling the sign.

Sign Installation



3 Mounting the Sign

Hold the sign up to the template to ensure the threaded rods align with the hole markings. Make adjustments to the template if necessary.

Drill a hole (3/16" drill bit) through each of the 12 designated hole markings on paper template. Remove template.

Inject clear silicone (supplied by others) into 3/16" pre-drilled holes. Insert the sign into the wall aligning the studs with the pre-drilled holes.

Review the installation.