

NORTH
EAST
COLOR



PetWellClinic Logo Lit Sign

INSTALLATION GUIDE

SKU# PW0038 | ver. 110923

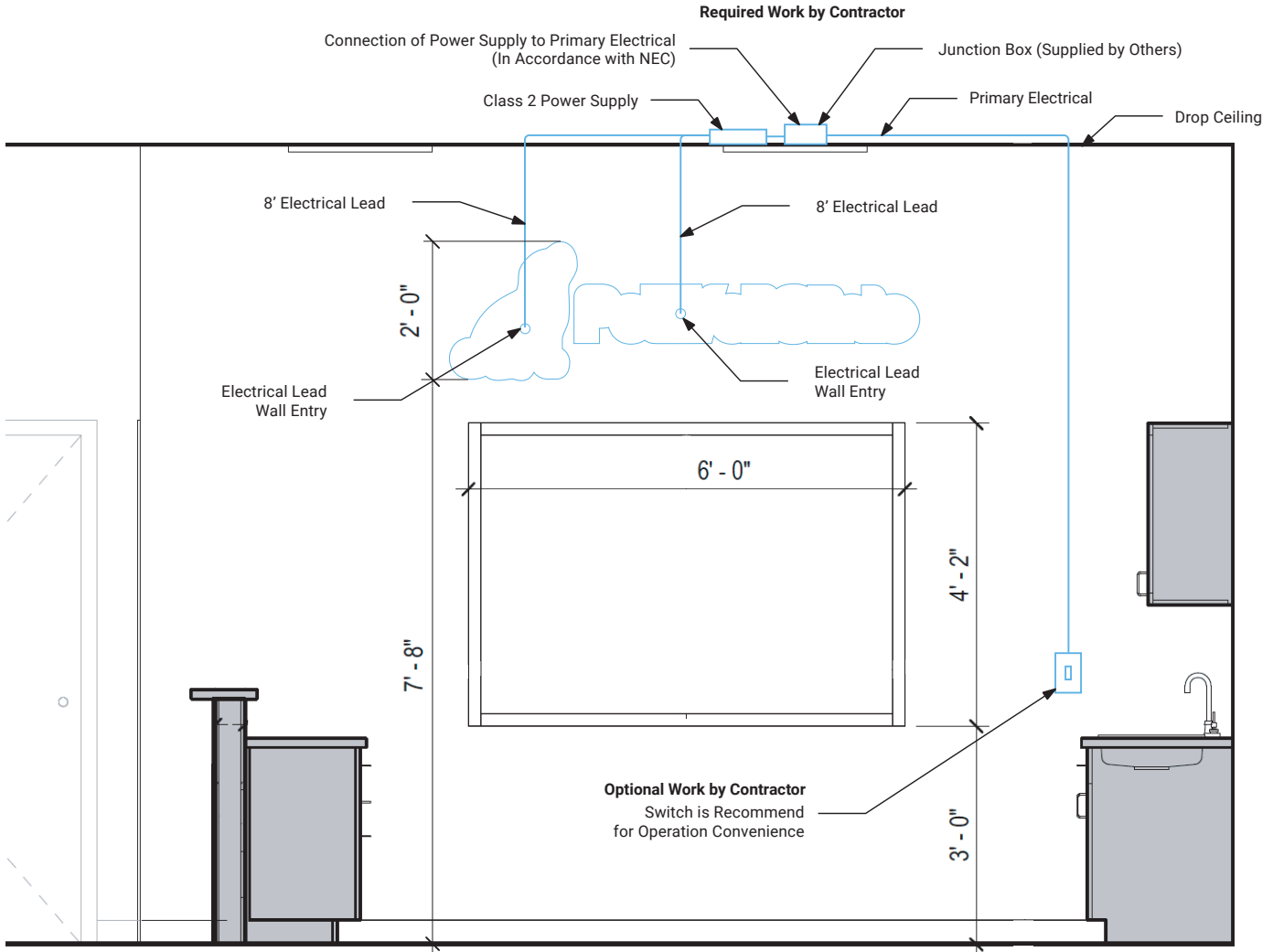
For Support Call: 603.436.8210



Two Persons are
Recommended
for this Installation

Site Preparation

Prior to sign installation, there will need to be a junction box (supplied by others) installed above the drop ceiling & with a line to the primary electrical system. The 12v 60w class 2 power supply (included) will be connected to the primary electrical at the junction box location during the sign installation.



What Comes in the Box?



12v 60w Class 2 Power Supply (UL Recognized)



2 to 1 Power Adapter



Sign

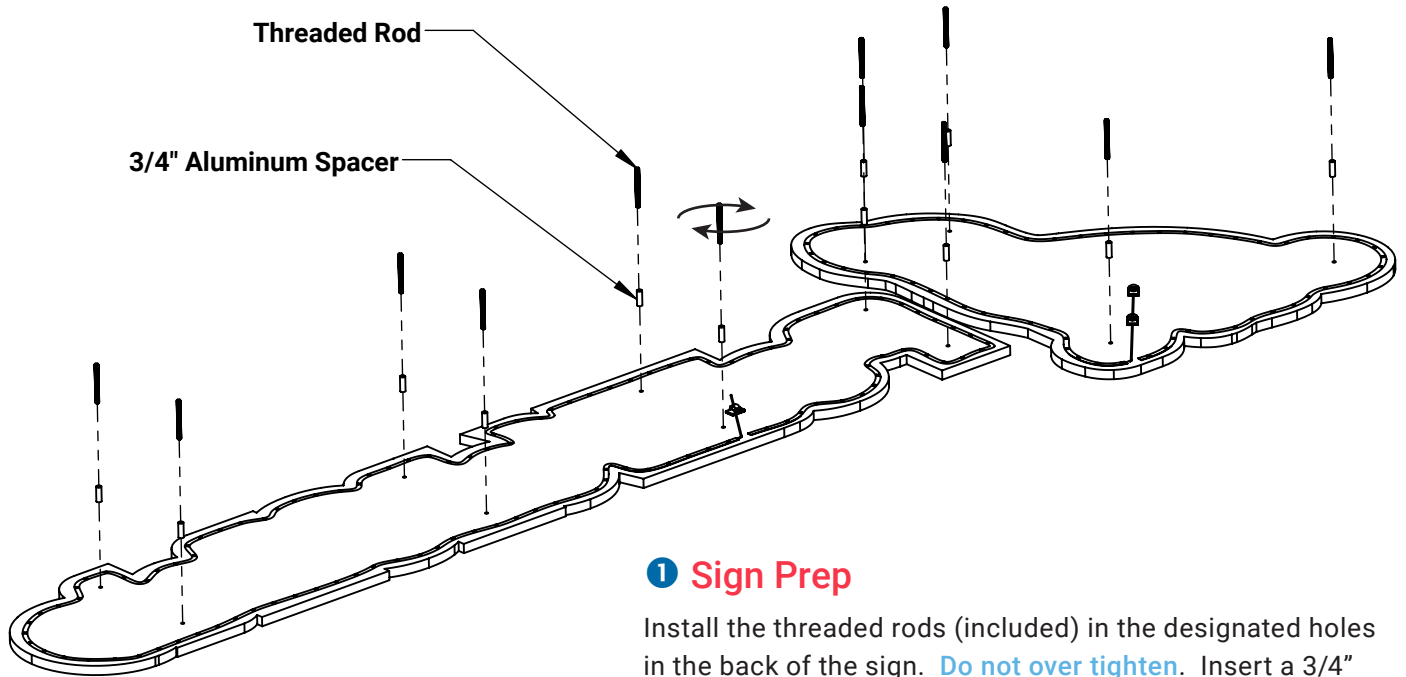


(12) 3/16" x 2" Threaded Rods



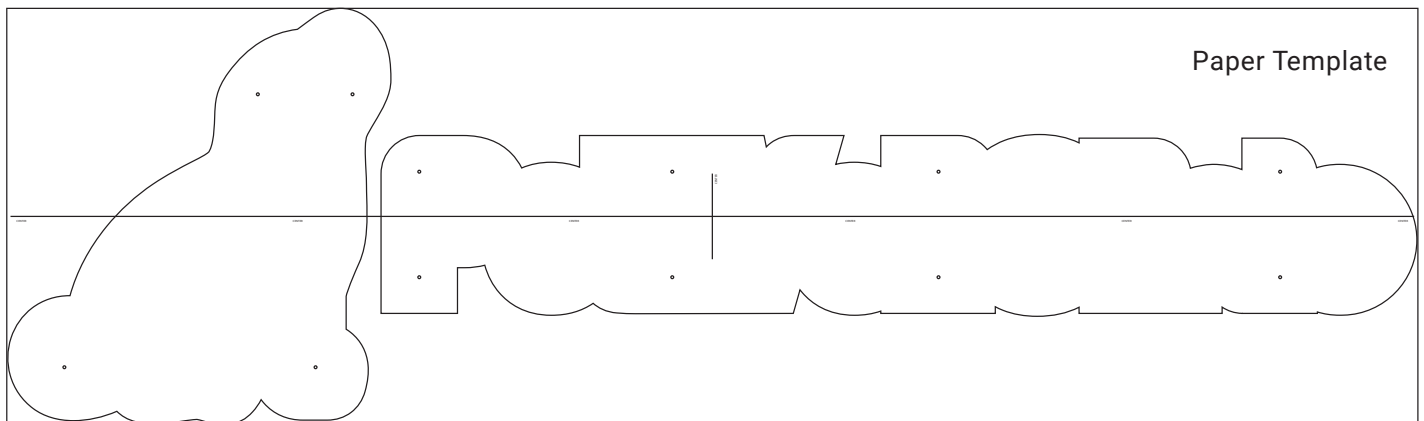
(12) 3/4" Aluminum Spacers

Sign Installation



1 Sign Prep

Install the threaded rods (included) in the designated holes in the back of the sign. **Do not over tighten.** Insert a 3/4" aluminum spacer (included) over each threaded rod.



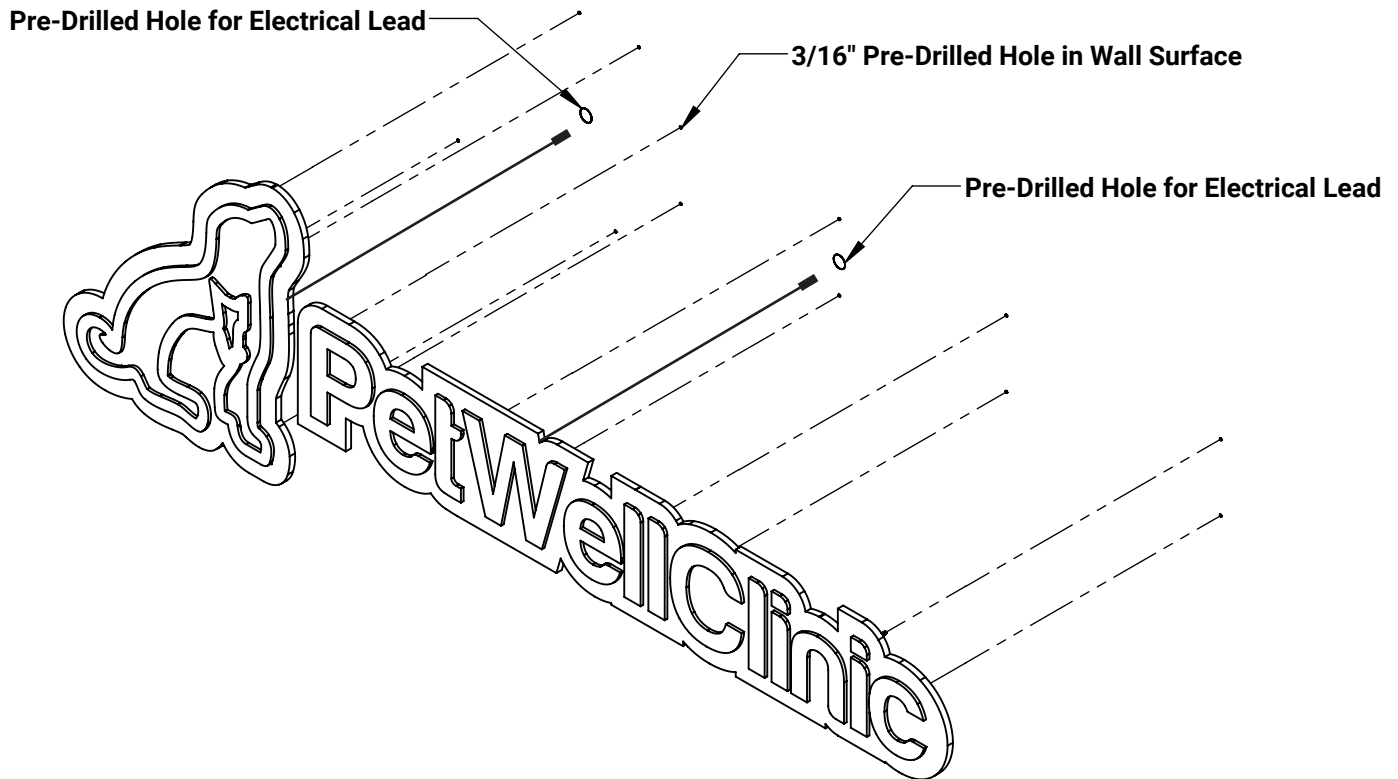
2 Paper Template

Place the paper template (included) on the wall and secure with tape. Use the horizontal & vertical lines to assist in centering & leveling the sign.

Hold the sign up to the template to ensure the threaded rods align with the hole markings. Make adjustments to the template if necessary.

Drill a hole (3/16" drill bit) through each of the 12 designated hole markings on the paper template. Remove template.

Sign Installation



3 Mounting the Sign

Based on where the electrical leads are coming off the sign and the stud locations in the wall, determine the most discrete access points on the wall. They should be behind the sign close to the electrical leads.

Pre-drill access holes to feed the electrical lead through. A wall bushing (supplied by others) is recommended.

Inject clear silicone (supplied by others) into 3/16" pre-drilled holes.

4 Complete Electrical

Feed the electrical leads in & up the wall to a pre-determined location above the ceiling while fitting the sign/threaded rods into the wall.

Secure the power supply (included) close to the pre-installed junction box so the lead can reach the box.

While the power is off - connect the power supply to the primary electrical within the junction box (in accordance with the National Electric Code).

Connect the two sign electrical leads to the 2-1 power splitter.

Attach the 2-1 power splitter (included) to the power supply.