

NORTH
EAST
COLOR



Spa Glow Window

PANEL REPLACEMENT GUIDE

SKU# PF00250-01 (Replacement Panel), PF00074-01 (Spa Glow Window) | ver. 033123

For Support Call: 603.436.8210

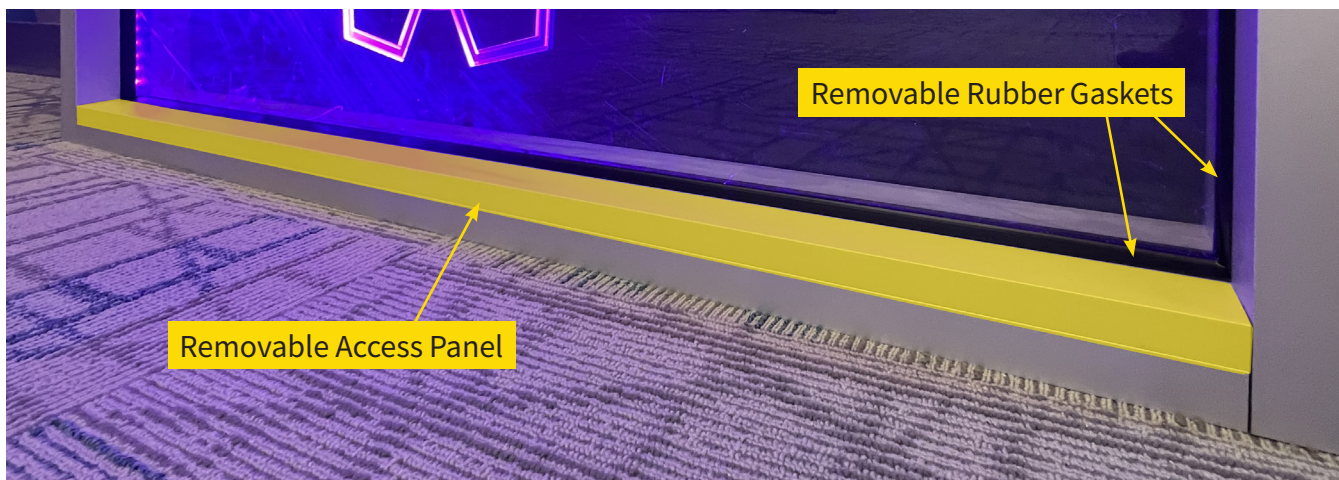
Compatible Model Identification

****ATTENTION****

PRIOR TO ORDERING - You will need to determine if your frame is compatible with the newly improved Spa Glow V2 Replacement Panel by looking for the following indicators.

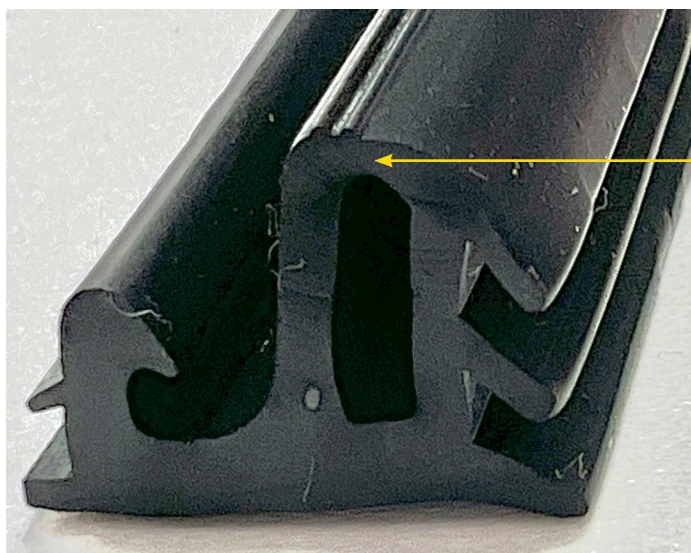
① Removable Access Panel

The window frame should have removable access panels on the top and bottom horizontal areas as shown. Both top and bottom access panels will be located on the same side of the window frame- but please note that they may be located on the exterior or interior side. Be sure to check both sides. The access panels are approximately 3/4" tall x 1-9/16" deep x 44" long.



② Removable Rubber Gaskets

There should be four (4) black rubber gaskets that join at the corners.



Carefully pry away at the corner of the gasket. The shape and profile of your gasket needs to match what is shown in this photo.

If these features are all present, your panel qualifies for the replacement.

Replacement Window Panel Installation

① Remove Gaskets

There is an extruded cap on the top and bottom of the frame on one side of the window. This is the side you will need to work on to gain access.

Remove all four (4) rubber gaskets from this side of the window.

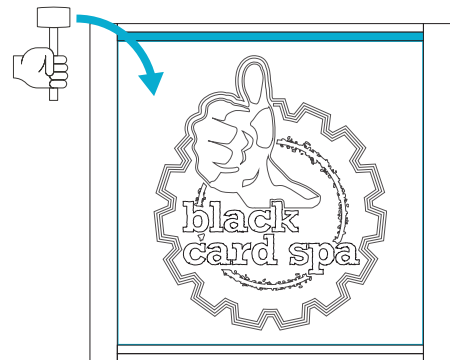


② Remove Extruded Caps

Now remove the top and bottom extruded caps. The best way to pop off these caps is with a rubber mallet by giving it an angled whack in the middle.

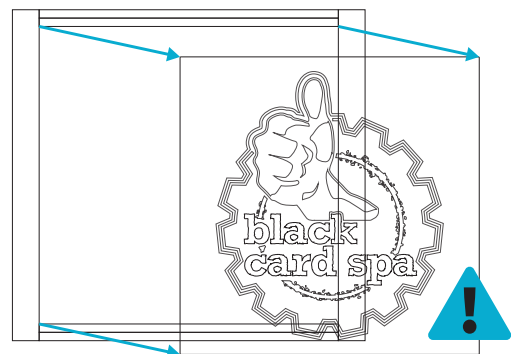
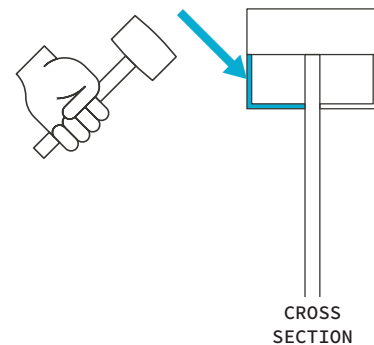
It should pop out of the channel rather easily so be ready to catch it.

Do not try to pry with a screwdriver or similar as this may likely result in damage to the soft aluminum.



③ Remove Acrylic Panel

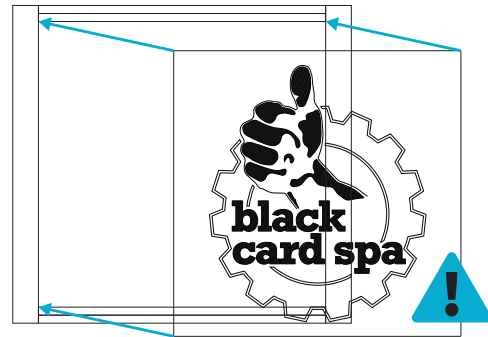
Remove the acrylic panel from the aluminum frame. This will require you to muscle and flex the acrylic in order to remove it.



Replacement Window Panel Installation

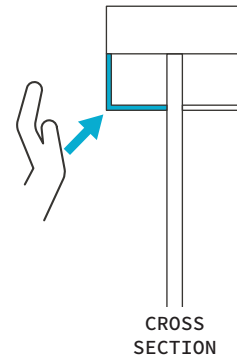
④ Insert New Acrylic Panel

Remove all paper backer from the new panel and insert the new panel into the aluminum frame by flexing it back into the channel. Make sure to take extra precaution when handling the acrylic because any scuffs and scratches will show when illuminated. Only use microfiber cloths with isopropyl alcohol to clean the acrylic.



⑤ Install Extruded Caps

Reinstall the top and bottom extruded caps by pressing them in.



⑥ Install Rubber Gaskets

Reinstall the four (4) perimeter gaskets.

Finished.

