

NORTH  
EAST  
COLOR



# Spa Glow Window

## **SERVICE GUIDE**

SKU# PF00074-01 | ver. 033123

For Support Call: 603.436.8210

# Light Strip Replacement

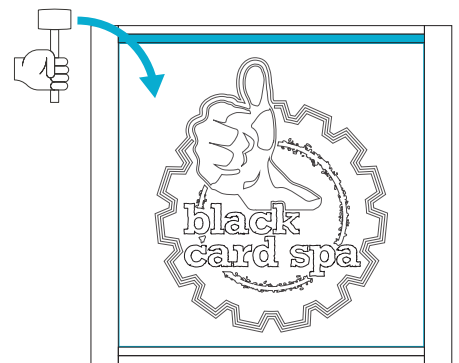
The Black Card Window has two (2) LED strips. One running down the left vertical side channel inside of the frame and one running down the right vertical side. The pigtails for both are located in the channel at the bottom of the frame where they are tied into the low voltage wire that runs to the transformer.



## ① Remove Gaskets

There is an extruded cap on the top and bottom of the frame on one side of the window. This is the side you will need to work on to gain access.

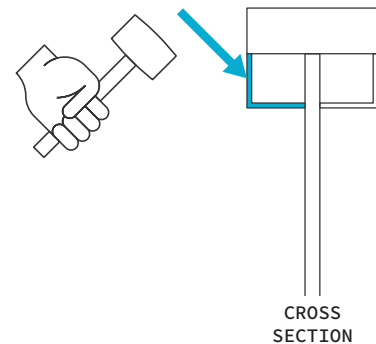
Remove all four (4) rubber gaskets from this side of the window.



## ② Remove Caps

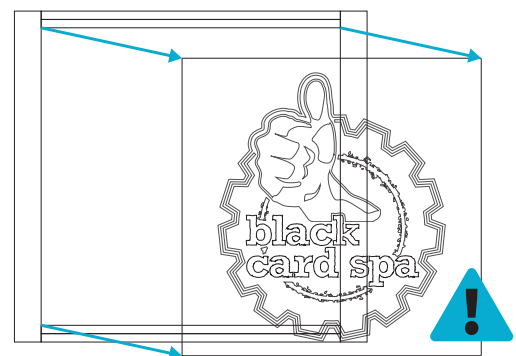
Now remove the top and bottom extruded caps. The best way to pop off these caps is with a rubber mallet by giving it an angled whack in the middle. It should pop out of the channel rather easily so be ready to catch it.

This is the preferred way to remove the caps because prying in with a screwdriver will likely damage the soft aluminum.



## ③ Remove Panel

Remove the acrylic panel from the aluminum frame. This will require you to muscle and flex the acrylic a bit. Make sure to take extra precaution when handling the acrylic face because any scuffs and scratches will show when illuminated.

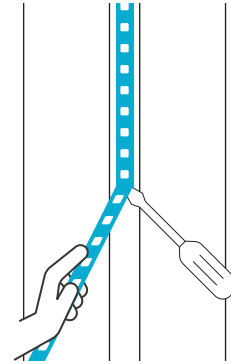


# Light Strip Replacement

## ④ Remove LED Strips

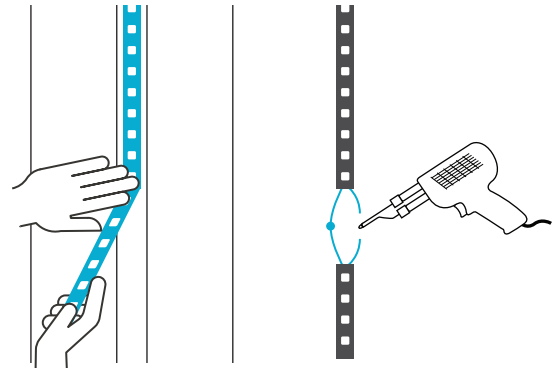
Unsolder or unclip the pigtail connections from both LED strips.

Remove LED strips. This may require a small flathead screwdriver to scrape them off the surface as the LED strips are adhered by VHB double sided tape.



## ⑤ Install New LED Strips

After removing any adhesive residue - install the new LED strips and solder in the new connections. A white or black wire would indicate a ground wire. Reinstall the acrylic panel by flexing it back into the channel.



## ⑥ Install Rubber Gaskets

Reinstall the four (4) perimeter gaskets.

Finished.

