



NORTH
EAST
COLOR

Planet Fitness Cleaning Station Flag

INSTALLATION GUIDE

SKU# PFREOPEN0028 | ver. 040623

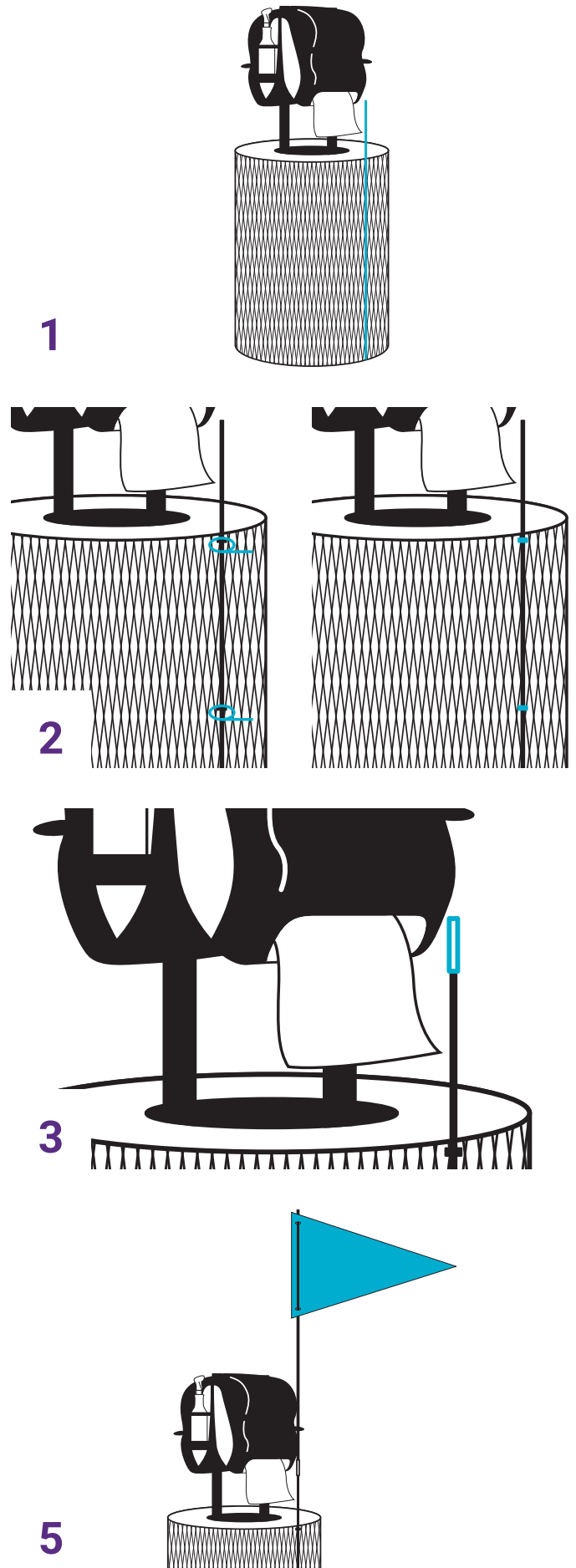
For Support Call: 603.436.8210

Sign Installation

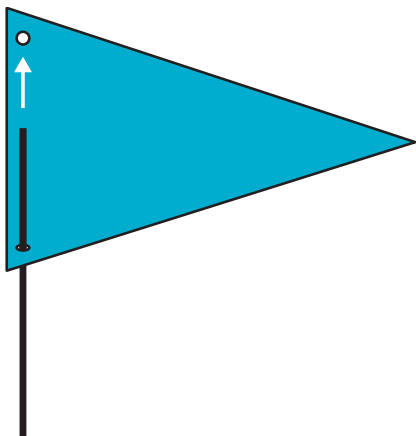
We recommend wearing disposable gloves during assembly to avoid any unwanted flaking from the fiberglass poles.

- 1 Place the lower pole resting on the ground and against the top and bottom rims of the trash can.
- 2 Secure the pole at the top, middle, and bottom of the trash can with the supplied cable ties by feeding them through the grate.
- 3 Place the connector ferrule on top of the bottom pole.
- 4 Feed the upper pole through the mounting holes of the flag. The natural tension will hold it in place.
- 5 Attach the upper pole to the lower pole via the ferrule connector.
- 6 Adjust the orientation of the flag sign as necessary for maximum visibility.

FINISHED!



4



5

